

EN



# The Original

High-Tech Made in Germany

# The Advantages of Traditional Horseshoes and Plastic Shoes Combined in One Horseshoe



## Designed and Produced in Germany

### From Farriers For Farriers

In his daily work as a farrier, Hubert Frank has always searched for new ways. That's why in the 90's, he started the development of our composite horseshoes. His vision was to enhance the well-being of the horse and make the daily work of the farrier easier.

The design is based on the hard and soft structures of the hoof

- stabilizing metal core
- flexible urethane cover

Video animation: <https://youtu.be/T1MRsvO5jk>



### Main Advantages of a Hybrid Shoe:

- shock absorption
- minimized risk of injuries in herds
- debris guard
- multiple options to modify and custom-fit
- different degrees of hardness depending on the urethane version of the shoe

**Sizes:** 50mm - 198mm

**Shapes:** front and hind pattern, open-toe and straight toe version

**Variety:** a.o. unclipped, clipped, threaded, deeper tread pattern, straight bar, jumper version, heavy duty shoe, pony shoe

**Application:** nailed, glued or cast

## Basic Knowledge

For composite horseshoes as well as pure urethane shoes, achieving the perfect balance between abrasion resistance and stability is of the utmost importance. Nevertheless, we have to keep in mind that their longevity is influenced by factors such as horse behavior, riding discipline, temperature, and ground conditions.

To meet the individual needs of each horse, our horseshoes are available in two different degrees of hardness:

- The slightly softer Standard version which has proven its value at lower temperatures.
- The slightly harder Extra version which performs well in summer months.





## Nailed Application

The Duplo horseshoe can easily be customized to fit the shape of the hoof, ensuring joint-friendly adjustments for the farrier using an angle or belt grinder. Its diverse modification options allow for optimizing the shoe according to the horse's specific needs.

The nailing slots are integrated into the metal inlay. That way, the nail head cannot slip through. Oblong nail holes allow individual nail placement.

In the nailed application, particularly when using an unclipped horseshoe, the knob arrays are our secret weapon. They reduce the risk of the horseshoe twisting on the hoof during the regular shoeing period.



[www.duplo-frank.de/en/shoeing-instruction](http://www.duplo-frank.de/en/shoeing-instruction)



## Key Aspects

- Be sure to select the appropriate size of the horseshoe and ensure a proper fit to the well-trimmed hoof.
- Make sure that the nail head cannot slip through the hole. We prefer E head nails.
- Thorough clinching and, if necessary, the use of quarter clips help to minimize the risk of twisting or slipping on the hoof during the regular shoeing period.

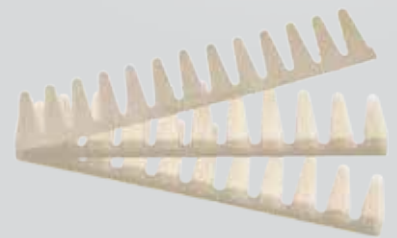


## Glued Application

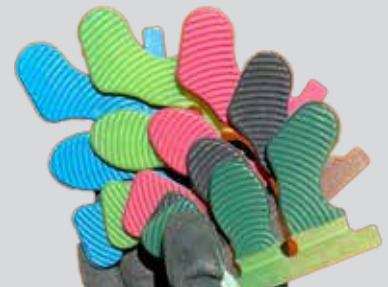
Welding Device for easier plastic welding of the tabs and collars to the horseshoe



[www.duplo-frank.de/en/glue-on-tabs-wolf-busch](http://www.duplo-frank.de/en/glue-on-tabs-wolf-busch)



Variety of Glue-on Collars



Variety of Glue-on Tabs

## Key Aspects

- Properly trim and prepare the hoof (roughen and degrease).
- Choose the right horseshoe and customize it to the horse's hoof.
- Remove all knobs for form closure - this also applies to the Nailless and Classic shoe.
- Ensure regular and solid welding seams. Special Tip: Perform a tear-test.
- Use suitable glue.







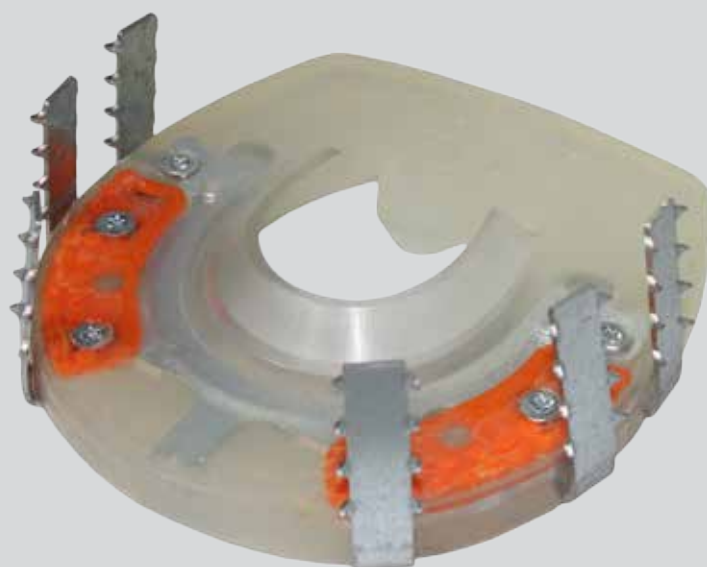
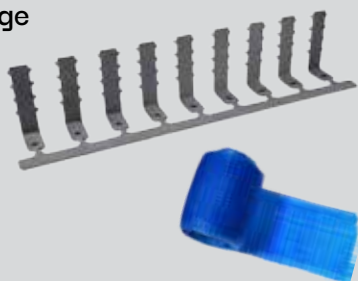
## Application with Cast Hooks and Casting Tape

The Cast can be helpful if the horn capsule must be stabilized and immobilized and if no nails can be used for fixating the hoof protection. Since the cast doesn't cover the outsole of the horseshoe, it won't wear out.

It is also ideal in combination with open-toed horseshoes.

### Necessary Equipment:

- cast hooks
- appropriate screws
- cast bandage



[www.duplo-frank.de/en/cast](http://www.duplo-frank.de/en/cast)

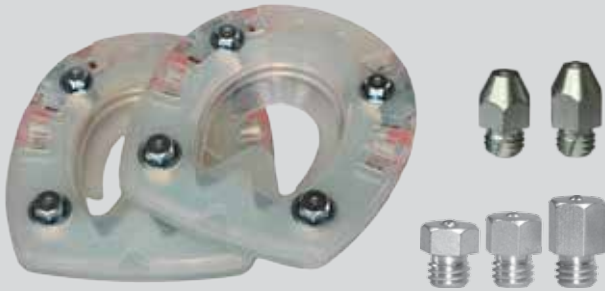


## Key Aspects

- Special horseshoes require specific skills and expertise. They should only be applied by professionals.
- Make sure to use the right size of horseshoe and to fit it properly to the horse's hoof.
- **Be careful:** The coronary band and the heel bulbs must remain uncovered from the cast bandage.
- Not intended for riding use.

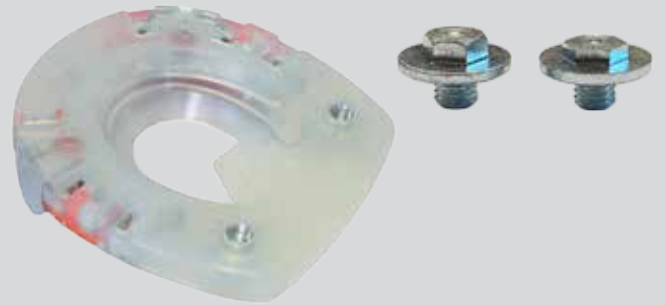
# Additional Grip for Your Composite Horseshoe

## Threaded Inserts for Studs and Spike Application



The **Jumper** is a clipped straight bar horseshoe featuring 4 thread inserts. It has been designed for show jumping, hunting, eventing, as well as carriage or wagon driving.

Due to its solid threaded inserts, the Jumper is well-suited for frequent stud changes.



Our clipped and threaded horseshoes are designed for the application of anti-skid studs. They are particularly suitable for trail riding and riding in winter, among other activities.

They are **not** suitable for regularly screwing the studs in and out.



During the period without studs, protect the thread inserts with stud blanks to prevent excessive contamination. This helps maintain shoe stability around the threaded inserts and avoids undesirable pressure on the hoof.

**Spikes** are comparable to tungsten carbide pins in traditional horseshoes.

With the appropriate adapter, they can be screwed into the plastic sheath, to provide extra grip.



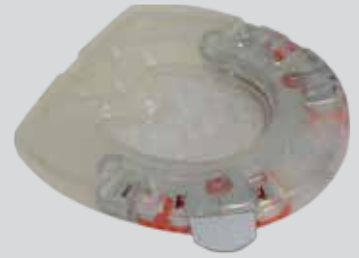
## Key Aspects

- Choose the appropriate studs (type / height / thread size) based on the horseshoe type, ground conditions, and riding discipline. Information about which studs are suitable for which horseshoe can be found in the respective product description.
- Please pay attention to the position of the thread inserts on the hoof when choosing the appropriate horseshoe shape, size, and any modifications to the shoe.
- Consider the increased risk of injuries in the herd and respect our safety advices.

# Special Requirements & Therapeutic Issues

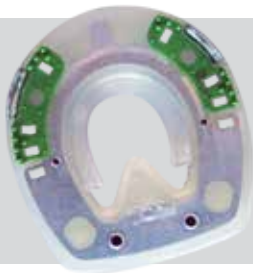
Requires Appropriate Expertise

The model with **closed sole area** is suitable for padding material. It can be a good choice for horses with sensitive hooves or thin soles as well as on very rocky terrain.



The **open-toe range** was initially developed for potential use in cases of laminitis. These horseshoes can be considered for various therapeutic applications.

Accessories (wedges, synthetic plates, extensions) can be used to customize the shoe and tailor it to the individual needs of the horse.



Our horseshoe with quarter clips and **straight bar** can be used when additional stability is required in the rear hoof area.

## Key Aspects

- Although Duplo horseshoes are not medical products and cannot cure hoof diseases, the targeted application of a composite shoe in coordination with the farrier, hoof technician and/or veterinarian, e.g. in the context of a therapeutic shoeing, can support the recovery process of the horse.
- Every product is only as good as its user. Especially in the therapeutic field, the optimal adaptation to the hoof and its needs is crucial for a functional hoof protection.
- We are ready to support you as best as possible but any remote advice can never replace the perspective of the on-site professional.
- Our products are not intended to diagnose or cure any medical condition.

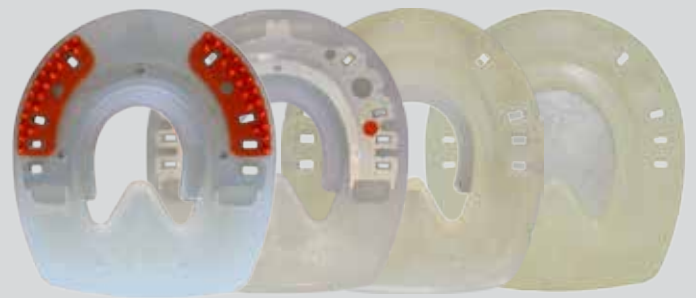
# An Ideal Choice for (Almost) Every Horse

Versatile Product Range to Meet Your Horse's Needs



Our most popular composite horseshoe by far is the Duplo with quarter clips. Our bestseller is available with regular and deeper tread pattern.

The clipped **Basic** model with deeper tread pattern is a more affordable alternative to the other profiled shoes in our product range.



Our range of unclipped composite horseshoes consists of the regular Duplo with knob arrays and the **Nailless** which was developed for glued application.

With the **Classic**, we also offer a pure plastic shoe. It is available with an open and closed sole area and in a version for pony hooves.

The **HDS series** was designed for those who require exceptionally abrasion-resistant and sturdy shoes. This includes working horses and draft breeds, among others.





The **Arizona** is an exceptional model that not only includes clips and a deeper tread pattern but also incorporates a steel reinforcement in the toe area. In rocky terrain, it offers extra safeguard for the plastic in the toe area, preventing premature chipping. It can also be used as a toe-weighted shoe.

## Duplo Composite Horseshoes

H. Frank Kunststofftechnik GmbH  
Vorderfreundorfer Straße 20  
94143 Grainet, Germany

Phone: +49 (0) 8585/96926-0  
Fax: +49 (0) 8585/96926-119

 [duplo\\_composite\\_horseshoes](https://www.instagram.com/duplo_composite_horseshoes)

 Duplo Composite Horseshoes

 [info@duplo-frank.de](mailto:info@duplo-frank.de)

 [www.duplo-frank.de](http://www.duplo-frank.de)

If you have any questions or individual challenges, our  
Customer Service Team will be happy to assist you!



Latest Update: 11/2023